



## SOLA Empowers Artists at Every Stage of Life

Hello from SOLA in Ballard,

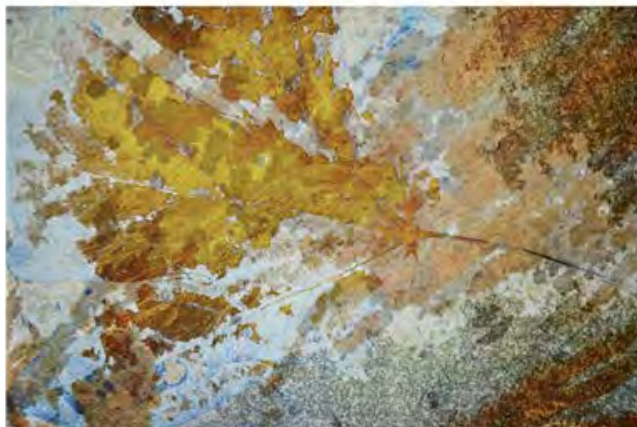
Artists thrive in a community! Every quarter, our Community Calls focus on networking to introduce artists across Washington, foster professionalism and, quite frankly, it's just a blast discovering more about an artist's journey — especially when it dates back 40 years. Witness how themes and stories endure, offering deeper insights into the wonderful individuals behind the art. 😊🎨

This week's networking Community Call was just that and more and we look forward to hearing from all of you again at the next one in December! You can always [follow us at Eventbrite](#) to be the first to hear about our upcoming events. Here are some fun social media shares from some artists attending this week that remind us to slow down and observe nature to find more balance after a busy summer.

Happy Autumn Equinox and thanks to all that come together with us in community!



lizruet



Liked by saraeverettart and 40 others

lizruet I just got off a great community call with @sola\_seattle, where we were invited to share an older piece with the group.

This is Remnants, digital collage from 2012, showing signs of my emerging sense of abstraction.



karenenerudd



Liked by patricia\_hagen24 and 156 others

karenenerudd I started making cardboard tree stumps nearly twenty years ago. They still mean something to me and remind me of a certain life-changing moment in the Northwest woods when, just for a moment, I could imagine deep time. #karenenerudd #cardboardtreestumps #ecoart #pnwartists #contemporaryartists #sculpture



**lisasnowlady**  
Queen Anne Hill, Seattle



20 likes

**lisasnowlady** At our SOLA meeting this week we each shared some of our older work. This is a page of one of my journals from decades ago.

#sola, #sketch, #seattlesketcher #urbansketching #artjournal  
#fallsketches #autumnwatercolor

## Lifelong Artists: Living Your Legacy In-person event Sunday, October 29!

Teaming up with our friends over at the Robert B. McMillen Foundation, we take this opportunity to turn inwards and reflect on life's passage with participatory, artist-led workshops about art and aging. This candid, powerful, event will feature intersecting takes on mortality and artistic practice, encouraging participants to reflect upon and honor their own legacies. Artists of all ages are invited to gather for creative hands-on workshops, friendship, food, and inspiring conversation.

Join us for this in-person event on Sunday,  
October 29th 1:00-4:00pm at Pratt Fine Arts  
Center in Seattle.

**SIGN UP TODAY, SEATING IS LIMITED!**

# LIFELONG ARTISTS

SUNDAY,  
OCTOBER 29,  
2023

PRATT FINE  
ARTS CENTER

1-4 PM



**ROBERT B  
McMILLEN  
FOUNDATION**

ART &  
AGING

HONOR  
YOUR  
ARTISTIC  
LEGACY

ARTIST LED  
WORKSHOPS

INTERSECTING TAKES  
ON MORTALITY &  
ARTISTIC PRACTICE

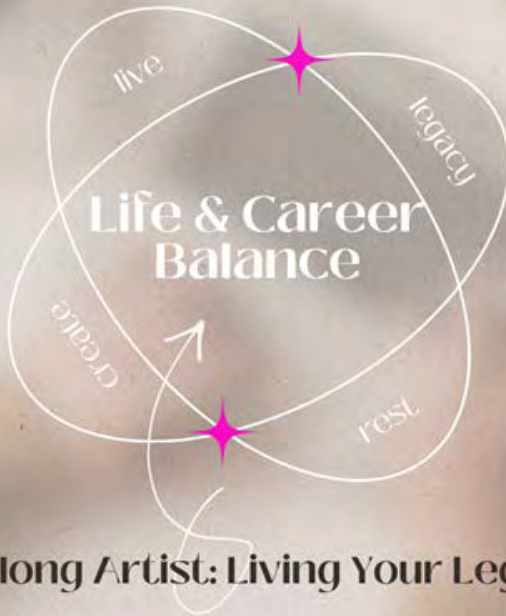
ARTISTS OF ALL AGES ARE INVITED TO GATHER FOR FRIENDSHIP,  
FOOD, AND GREAT CONVERSATION.  
(LIMITED SEATING!)

REGISTER AT

[MCMILLENFOUNDATION.ORG/EVENTS/LIFELONG-ARTISTS-LIVING-YOUR-LEGACY/](https://mcmillenfoundation.org/events/lifelong-artists-living-your-legacy/)

## LIVING YOUR LEGACY

## SOLA Mini Workshop



Lifelong Artist: Living Your Legacy



**All workshop attendees will receive a free *Famous Female Artists Planning for Success* workbook!**

**We highly recommend adding the [Joan Mitchell Foundation's Legacy Planning Guides](#) to your unfolding legacy building journey.**

SOLA Executive Director, Nichole DeMent, will facilitate a mini workshop from SOLA's "[Famous Female Artist: Planning for Success](#)" planner. Focused on balancing life and career, small groups will receive support in assessing top life and career priorities for greater balance. It's a fantastic opportunity to gain insights into what balance means for you as an artist. We hope to see you at this in-person event on Oct. 29!

**SIGN UP TODAY, SEATING IS LIMITED!**

---

We are thrilled to share that SOLA Founder, Ginny Ruffner, has been awarded the prestigious Governor's Arts & Heritage Award! We are so proud that her generosity of giving and lifetime of dedication to creativity has come

full circle with this prestigious recognition of the Governor's Arts & Heritage Award.

[Congratulations and thanks to all nine honorees for their incredible dedication and noteworthy contributions to Washington's arts and culture!](#)



Now in her 71st year, Ginny has had 88 (and counting) solo shows, several hundred group shows, and her work is in 55 permanent museums and public collections around the world. Her list of honors is nearly as extensive as her exhibitions; her impact on our region's arts and cultural communities is significant. Her unstoppable drive to create a life of joy looks effortless, but behind the work is an inspirational story of resilience. If you don't know her story, we encourage you to watch the award-winning documentary titled, "[A Not So Still Life, the Ginny Ruffner Story.](#)"

Ginny continues to thrive because of her talent, drive, sense of purpose and deep curiosity about people, history, and seeing possibilities in what can seem impossible; she has persevered in a way only Ginny could—with humor and

grit. Driven by curiosity she forges new avenues to inspire; the very spirit of change and triumph over adversity is foundational for her —as well as gratitude. As a way to give back, she founded SOLA in 2016 to reward underrecognized mature women artists. She says, “The most valuable thing I can do is create a meaningful way to say ‘We see you’ to my peers who have not had as much of the validation of recognition.” By the end of 2023, Ginny and friends will have awarded \$77,000 through SOLA with a benefit for Washington State's arts community totaling well over \$100,000. From SOLA, to her Augmented Reality and paintings, works on paper and, of course, metal and glass installations, we are grateful for Ginny's many accomplishments and the impact we can make through her vision and support for women artists in Washington.



*Known initially as a glass artist, Ginny now has public art installations across the Pacific NW including a 30-foot tall kinetic water feature—and potted plant—outside downtown Seattle's Sheraton Hotel.*

# SOLA

RECOGNIZING MATURE FEMALE ARTISTS IN WA

Share

Forward

Support of Old Lady Artists  
PO Box 17554  
Seattle, WA 98127

The only constant is change, so here's an easy way to update your newsletter settings with us or unsubscribe below.

[Preferences](#) | [Unsubscribe](#)